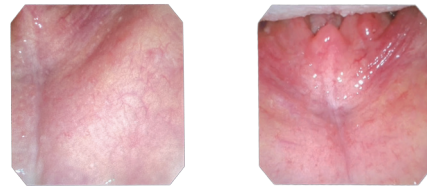




ES-5000 NEW VIDEO ENDOSCOPY LINE VIDEO GASTROSCOPE & COLONOSCOPE

High Definition

Megapixel high-definition sensor, 1080P full HD video signal output, perfect image.



Auxiliary water function

The auxiliary water jet can ensure a clean and clear endoscopy environment at any time, and can quickly find the bleeding point.



Auxiliary water function



Lightweight and smooth handle



Small Bending Radius/Large Angle

Storage/Patient Information Entry Function

Supports the imaging capturing and video recording function.

Memory data can be stored on USB flash drive.

Supports USB keyboard can Patient information entry function



USB data transfer



USB keyboard can custom case



Image/Video Storage

Ultra High Compatibility

This series scopes camera multilingual system suite for wide variety of endoscopes that can be used for different applications in different organ systems including the **gastroscope**, the **colonoscope**, the **bronchoscope**, the **nasopharyngoscope**, the **cystoscope**.....

Endoscope System+ Endoscope pump



ES-CLS80 LIGHT SOURCE

Lamp : LED light (80W white)
Power : 220-240V; 50-60HZ
Illuminance : >200,000 lx
Color temperature : >5300K
Air pump pressure : 30-60Mpk,
Air flow : 4-10 L/min



ES-EIS5000 IMAGE PROCESSOR

Video signal output: HDMI , VAG
Sharpness adjustment : 0-10 grade
Brightness adjustment : 0-100 grade
Color setting : Red , Blue (0-128 grade)
White balance : Auto white balance/Manually white balance
Gain function : 1-16 grade
Image enhancement : 1-4 grade



Endoscopic Pump

Removable pumphead for quick and easy assembly

The water flow can be adjusted independently

Closed water flushing system

ES-5000 NEW VIDEO ENDOSCOPY LINE



VDS300 Video Duodendoscope



Diameter of Distal-end	Diameter of Insert Tube	View of field	Biopsy channel	Working Length	Depth of View	Resolution	Tip Deflection
Ø12.0mm	Ø12.0mm	100°	Ø3.7mm	1200mm	3-100mm	1000K pixels (cmos)	UP125°;Down 90°;L/R 90°

ES-VPG200 Video Pediatric Gastroscope



Diameter of Distal-end	Diameter of Insert Tube	View of field	Biopsy channel	Working Length	Depth of View	Resolution	Tip Deflection
Ø6.5mm	Ø6.5mm	140°	Ø2.0mm	1030mm	3-100mm	1000K pixels (cmos)	UP180°;Down 90°;L/R 100°

ES-VPC300 Video Pediatric Colonoscope



Diameter of Distal-end	Diameter of Insert Tube	View of field	Biopsy channel	Working Length	Depth of View	Resolution	Tip Deflection
Ø11.0mm	Ø10.8mm	140°	Ø3.2mm	1350mm	3-100mm	1000K pixels (cmos)	UP180°;Down 180°;L/R 160°

ES-Video Rhinolaryngoscope/Cystoscope/Bronchoscope



Name	Diameter of Distal-end	Diameter of Insert Tube	View of field	Biopsy channel	Working Length	Depth of View	Resolution	Tip Deflection
EVR-5 Rhinolaryngoscope	Ø4.9mm	Ø4.9mm	120°	Ø2.2mm	410mm	2-50mm	300K pixels (cmos)	UP160°;Down 130°
EVC-5 Cystoscope	Ø4.9mm	Ø4.9mm	120°	Ø2.2mm	380mm	2-50mm	300K pixels (cmos)	UP160°;Down 130°
EVB-5 Bronchoscope	Ø4.9mm	Ø4.9mm	120°	Ø2.2mm	530mm	2-50mm	300K pixels (cmos)	UP160°;Down 130°